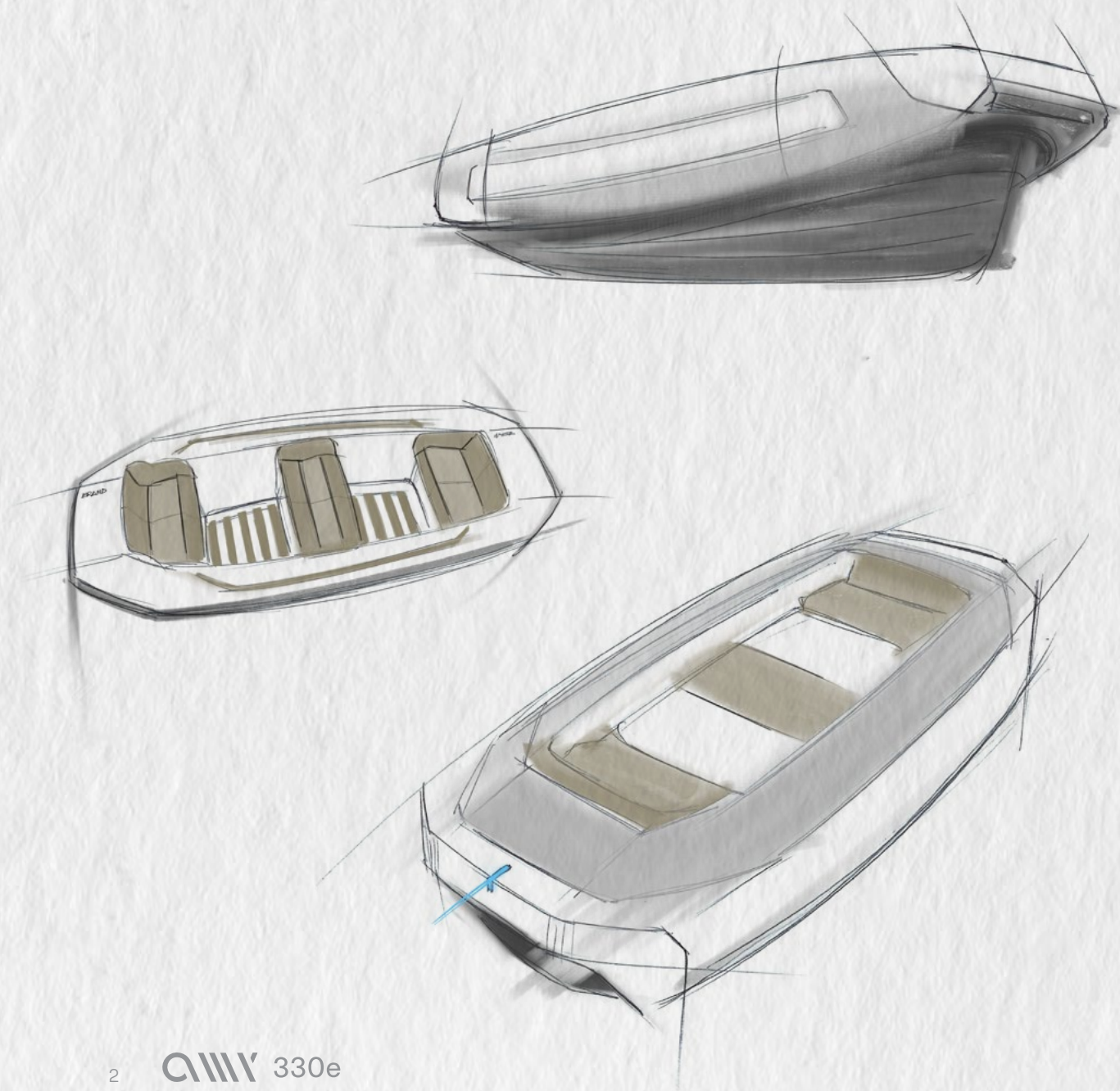


Amare

AWV 330e

the Quiet Revolution.



Exclusive. Pure. Iconic.



Revolutionizing the familiar, transforming the future.

Any electric tender redefines the concept of jet tenders by reinterpreting classic design elements through the visual codes of the world of **electric** engines.

Flowing lines replace sharp edges, embodying silent efficiency. Intuitive controls, a playful silhouette and minimalist equipment ensure innovation meets comfort.

Any transforms tradition, setting a bold new standard for jet tender design and heralding the **future of luxury**.



Electric power, endless adventures

The world's newest tender concept
for your most unforgettable moments

Embark on a new adventure with us.

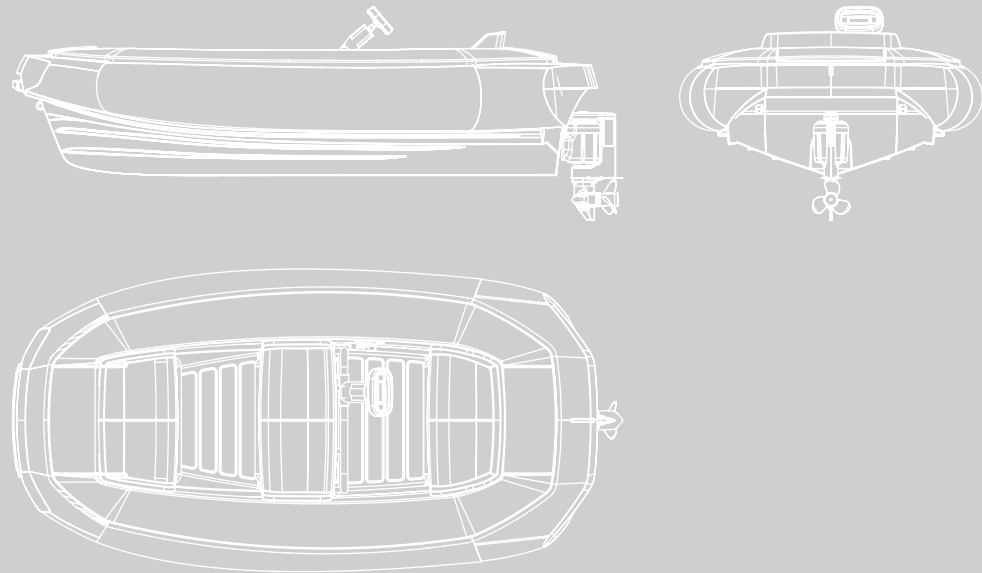
We are proud to introduce Amy, the latest and most exciting addition to Amare Group's product line.

This is a testament to our unwavering **commitment to innovation**, a project born from over a year of in-depth research and collaboration with the most forward-thinking designers and suppliers in the industry. Every detail of the Amy 330e has been carefully crafted to reflect our dedication to excellence.

Handcrafted in Italy, Amy is not only a symbol of cutting-edge technology but also of the unrivaled craftsmanship and expertise that defines Amare.

The future of 'Made in Italy' excellence is here.

Full Pre-preg carbon fiber moulded hull and deck



Pre-Preg Carbon fiber technology benefits from lightness, strength and exeptional performance.

Pre-preg's **precision moulding** ensures superior structural integrity, smooth surfaces and flowing curves

Highly resistant to fatigue, weathering, and environmental factors such as UV degradation and chemical attack, carbon fiber proves a perfect match for the marine environment.



UPHOLSTERED SEAT WITH BACKREST
For enhanced comfort

YACHT LOGO

TAILLIGHT
And status information

ELECTRIC ENGINE
Revolve by MITEK

PRE-PREG TECHNOLOGY
RECYCLED CARBON FIBER HULL,
STRUCTURE AND WALKAROUND

ANTI-SLIP SURFACES
Perimeter and floor

360° WALK-AROUND SURFACE
Solid surface for comfortable boarding
and disembarkment

BOW STORAGE

BOW FENDER

UNDERSEAT STORAGE

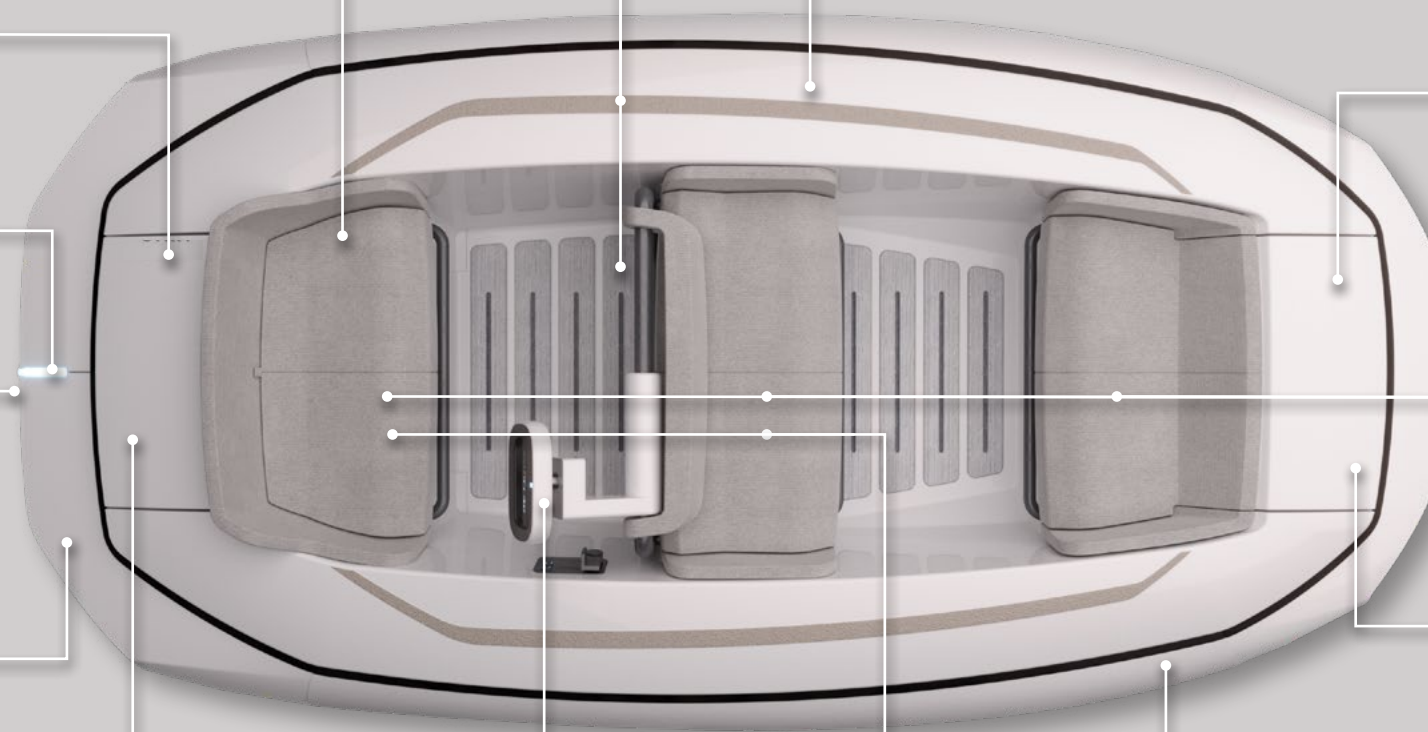
CHARGING POINT

STERN STORAGE

COMPACT STEERING WHEEL
With ASW Wireless
Automation for real-time status
communication with main Yacht

BATTERIES
in underseat storage

CONCEALED TUBES



SPECIFICATION

LOA

3.30m / 10ft 9in

DRY WEIGHT

290kg / 639lbs

SEATING

4 persons

HEIGHT

0.90m / 2ft 11in (with steering wheel)

0.72m / 2ft 4in (without steering wheel)

BEAM

1.7m / 5ft 7in (with inflatables)

1.58m / 5ft 2in (hull only)

DRAFT

0.24m / 9.4in with one person

0.33m / 1ft 1in full load

ENGINE

MITEK Revolve 20

BATTERIES

3 LiFePo4 (Lithium Iron Phosphate) modules of 48V
100Ah. with a total capacity of 15 kWh.

MAX SPEED

21 kn (one person of 75kg)

RANGE

- at max speed (21kn) with one person - 14,1 kw: 1h 10min
- at 10kn with one person - 8,5 kw: 2h 11min
- at max speed (18kn) with 2 people - 14,1 kw: 1h

FEATURES

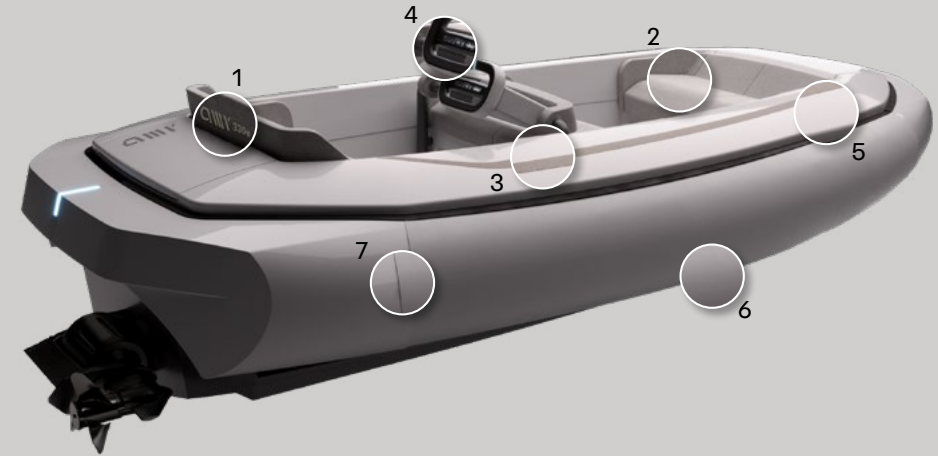
STANDARD FEATURES

- Watertight battery pack
- Battery isolator
- LED charge indicator
- Plug-in navigation lights
- Bluetooth audio system
- 1 x USB, 2 x USB-C Sockets
- Upholstered seat with fire resistant foam
- 3 under-seat storage
- Removable cushion seats for storage access
- Foldable, height-adjustable steering wheel
- Digital display with ASW Wireless Automation integration
- Anti-slip footwell inlay
- Fire estinguisher
- Safety kit (vest, safety ladder, paddle and torch)
- Throttle / shift control
- Engine flushing point
- Bow U-bolt
- Stainless steel tube grab handles
- Automatic bilge pump
- Four point lifting pad-eyes
- Two rear tie down points and Tow hook
- Tube repair kit
- Footpump

- Mooring cleats
- Charging cable
- Personalized water bottle
- Manual anchor
- Cleat
- Cover

OPTIONAL FEATURES

- LED Deck lights
- Underwater lights
- Battery charger
- Mooring rope kit
- Automatic full or bow tube inflator
- Chart Plotter
- Digital Depth Sounder
- VHF Radio
- Stainless steel anchor
- Yacht name or logo embroidering
- Tacht name or logo on tube



CUSTOMISATION OPPORTUNITIES

1 - Yacht Logo Embroidering and Logo

2 - Upholstery fabric and colour

3 - Anti-slip material colour



4 - Steering wheel upholstery
(Black Alcantara or Black Faux Leather)



5 - Superstructure colour
(Cream White, Midnight Black, Forest Green)

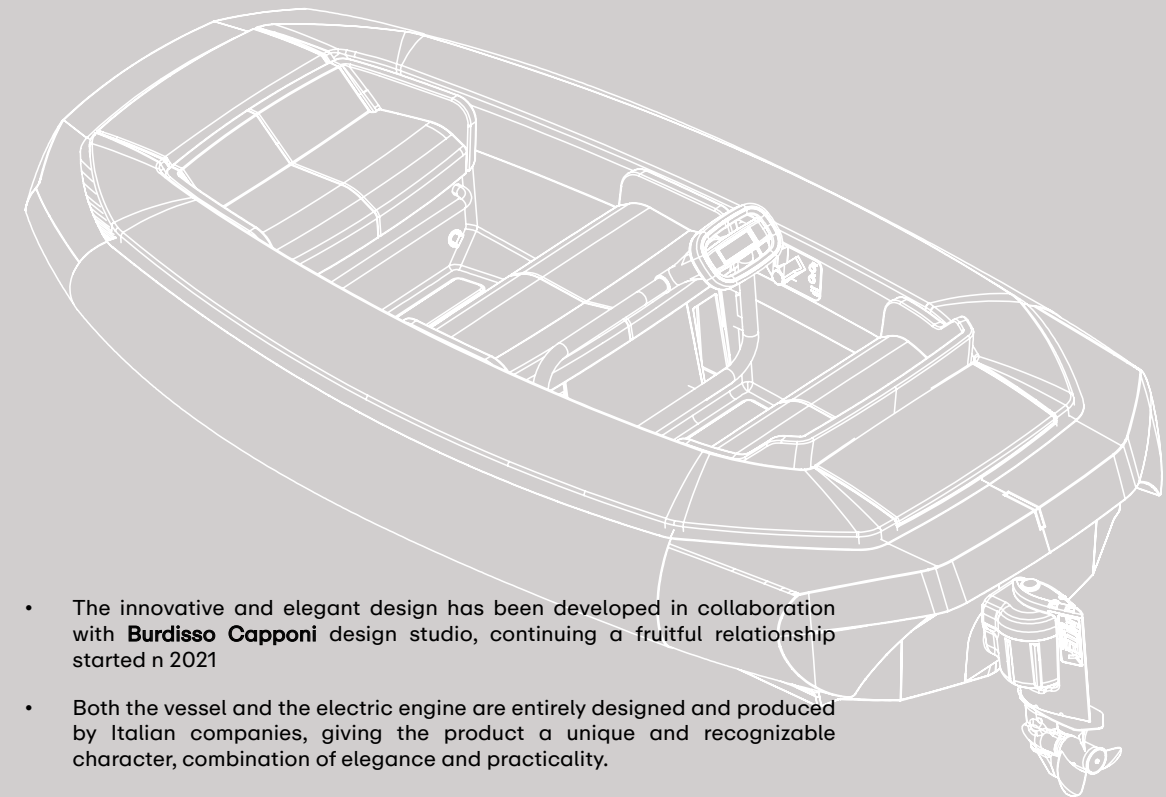


6 - Tube colour
(Cream White, Midnight Black)



7 - Rub strake colour
(Cream White, Midnight Black)





- The innovative and elegant design has been developed in collaboration with **Burdisso Capponi** design studio, continuing a fruitful relationship started in 2021
- Both the vessel and the electric engine are entirely designed and produced by Italian companies, giving the product a unique and recognizable character, combination of elegance and practicality.
- The AMY series epitomizes **Italian craftsmanship**, with its concept, design, PRE-PREG carbon fiber structure, and electric engine entirely conceived and manufactured close to Modena, Emilia-Romagna, by Italian companies.
- Amy showed **outstanding performance and energy management** at sea in ideal testing conditions.
- Total weight, including batteries, is **290 kg**.
- The propulsion system was awarded a special mention at the DAME 2024 in Amsterdam, during METS trade show.
- **MITEK Revolve** electric engine is designed to work with any batteries, but the standard provided - LifePro 4 Battery pack - provides with premium performance, flexible approach to client requirements in terms of weight and autonomy, and outstanding safety on-board.

 Amare group



amaregroup.com